

13 March 2006

Manager Company Announcements
Company Announcements Office
Australian Stock Exchange Limited
Level 10, 20 Bond Street
SYDNEY NSW 2000

by e-Lodgement

Dear Sir/Madam

ROADSHOW PRESENTATION

Attached please find a copy of a presentation which David Richards, Managing Director, is presenting in a roadshow in Melbourne, Sydney and Brisbane.

Yours faithfully



David Richards
Managing Director



G L E N G A R R Y

**Strategic Plan
2006**



Corporate Summary - Glengarry Resources

- *A energised, focussed company*

- ◆ Shares on issue 208 million (ASX:GGY)
- ◆ Market cap. \$13.5 million (6.5 cps)
- ◆ Cash \$2.2 million
- ◆ Status Active Australian-based explorer



ASX
AUSTRALIAN STOCK EXCHANGE



Key People - Glengarry Resources

- *Experience, successful, focussed*



David Richards – *Managing Director*

- *Appointed September 2003*
- *>20 years experience*
- *Delta Gold, Battle Mountain (Australia)*
- **Discoveries - Vera Nancy (Qld)/Triple P (WA)**

Keith McKay – *Chairman*

- *Appointed November 2004*
- *>30 years experience*
- *Gindalbie, Gallery Gold, Battle Mountain (Australia)*
- **Discoveries - Vera Nancy (Qld)/Mupane (Bot)**



Kevin Seymour – *Exploration Manager*

- *Appointed September 2004*
- *>20 years experience*
- *SOG, Delta Gold*
- **Discoveries - Mulgarrie (WA)/Mercury Deeps (WA)**



Projects - Glengarry Resources



Greenvale – Advanced Prospects and Targets

Maitland

- High-grade supergene copper (>50,000 tonnes @ >5% copper)
- Primary copper-molybdenum (>1,000,000 tonnes @ >3% copper)

Oasis/Metallica JV

- Unconformity-style, medium grade uranium deposit (>2,500,000 tonnes @ >0.15% U_3O_8)

Mt Remarkable

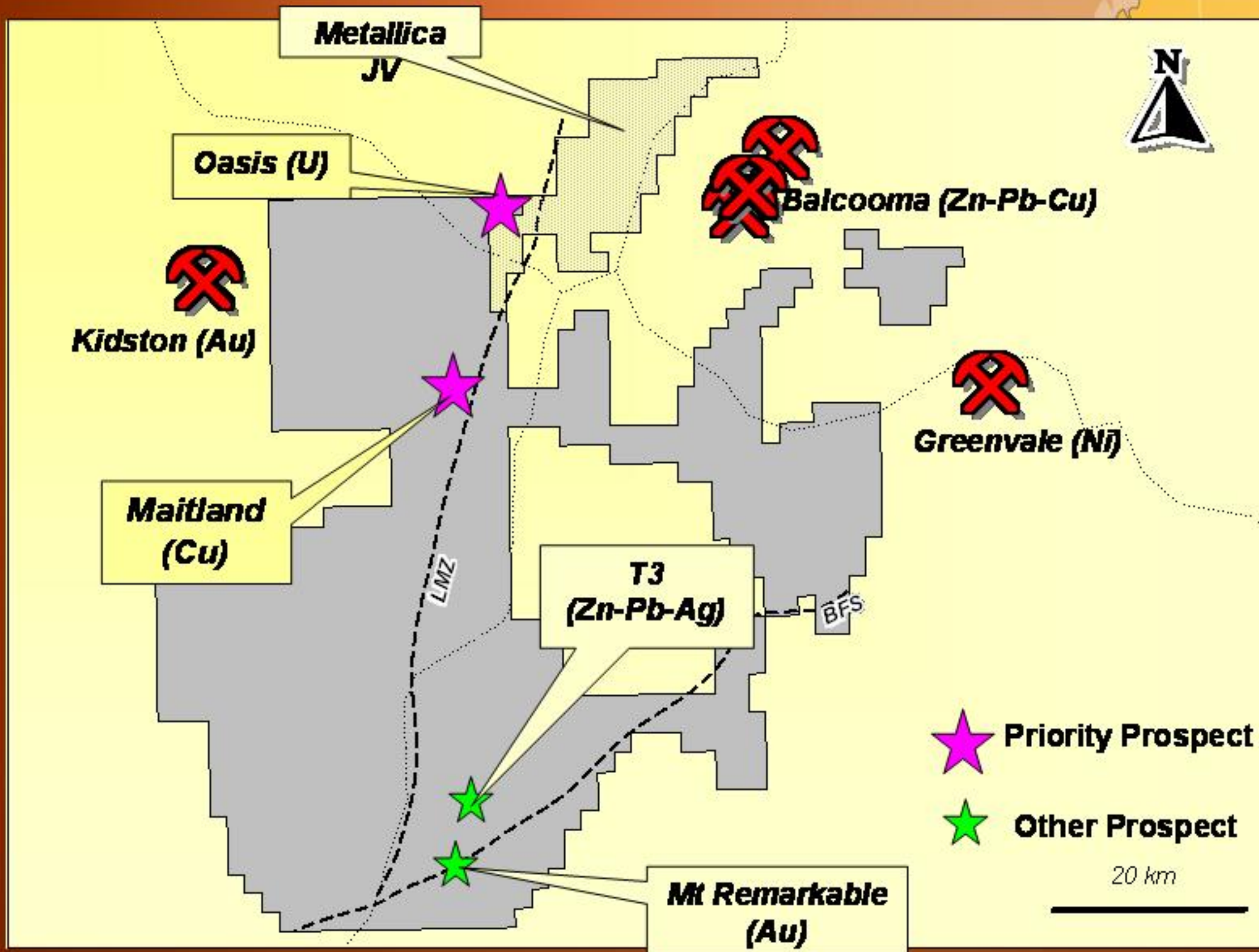
- Multi-million ounce Mt Leyshon/Kidston style gold deposit (>30,000,000 tonnes @ >2 g/t gold)

T3

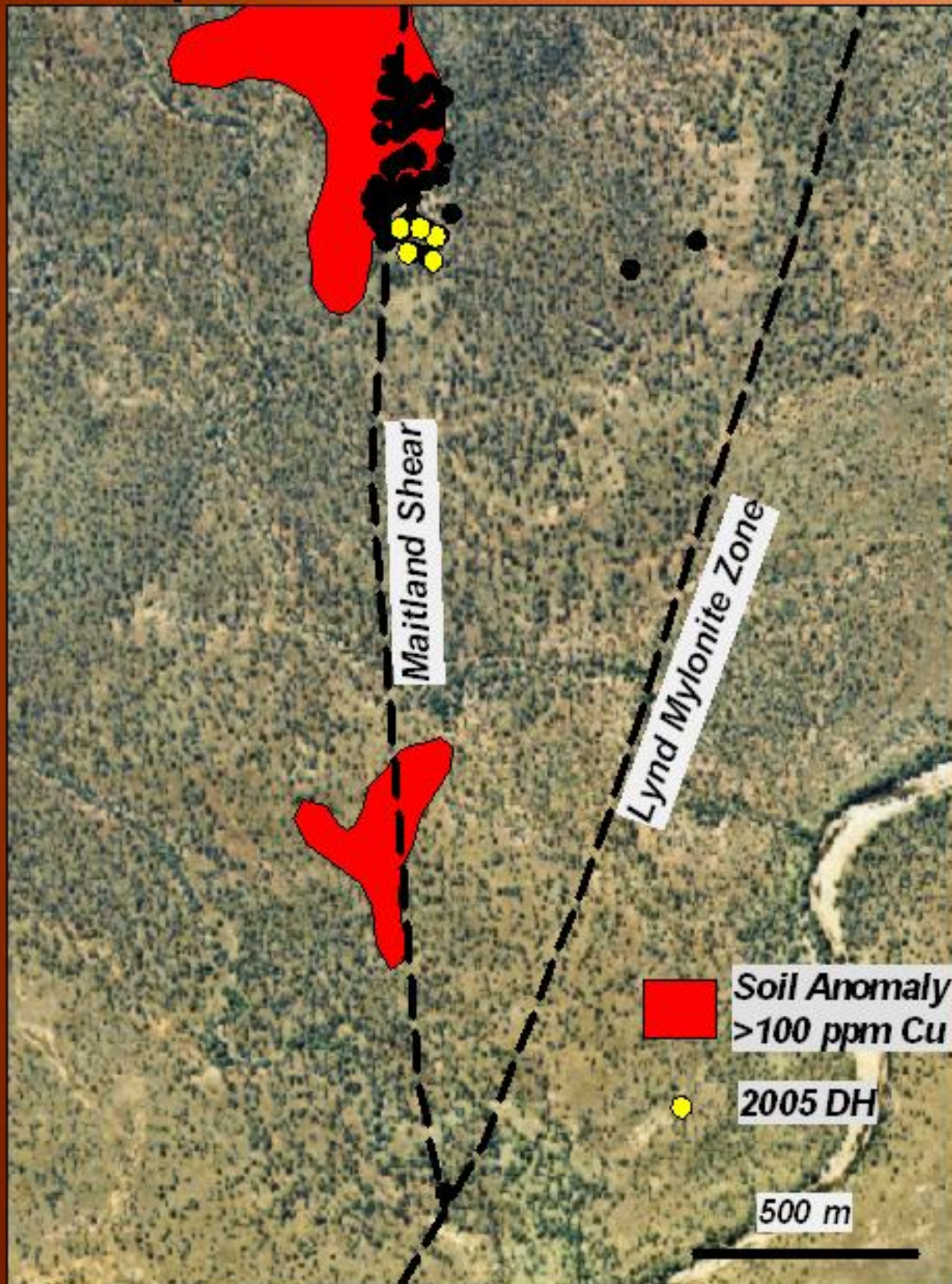
- High-grade Balcooma style polymetallic massive sulphides (>1,000,000 tonnes @ >10% Zn, 5% Pb, 30 g/t Ag)
- Supergene and primary copper (as per Maitland)



Greenvale – Tenure and Prospects



Greenvale – Maitland Copper-Molybdenum Prospect

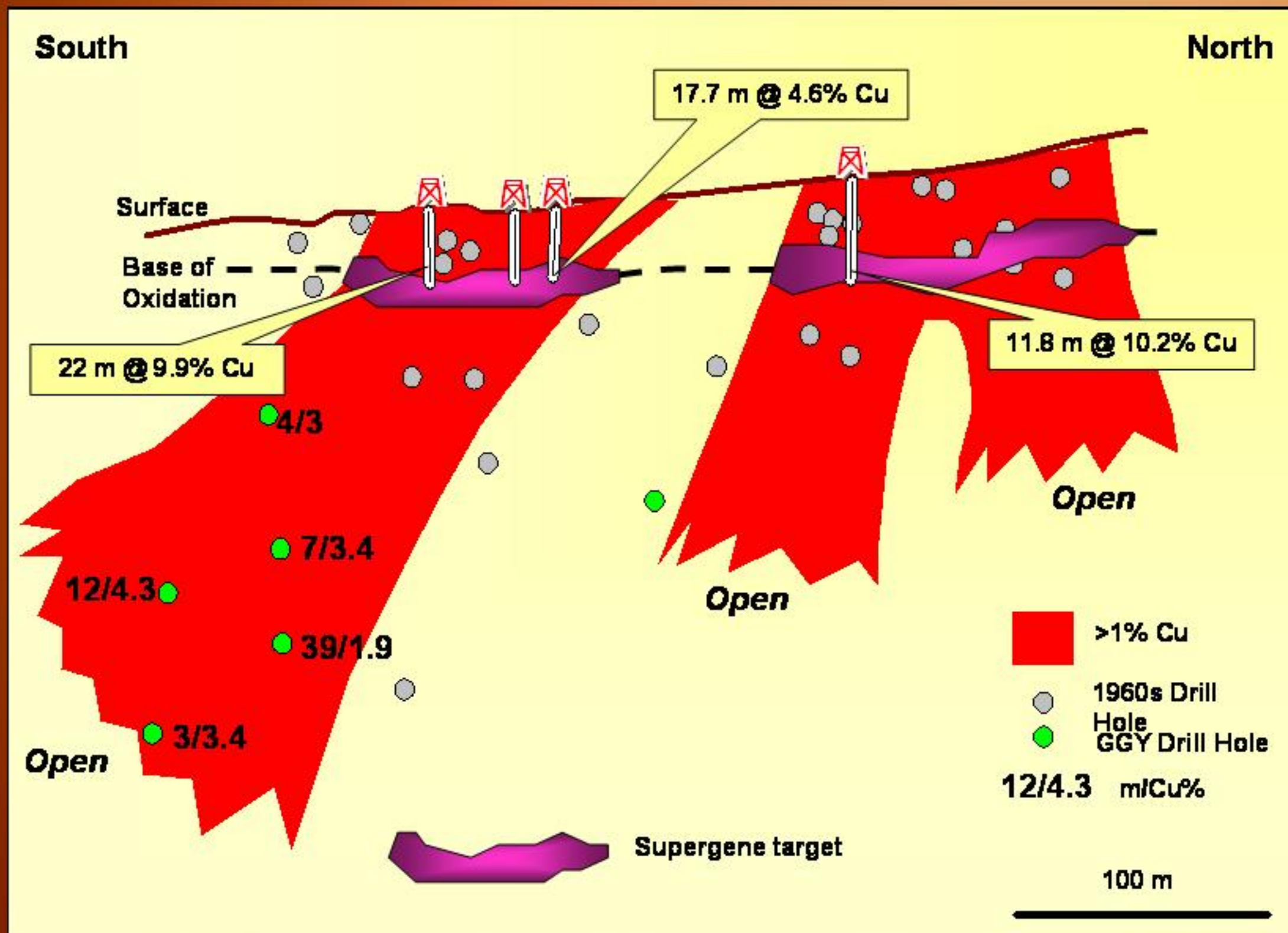


Historic mine workings

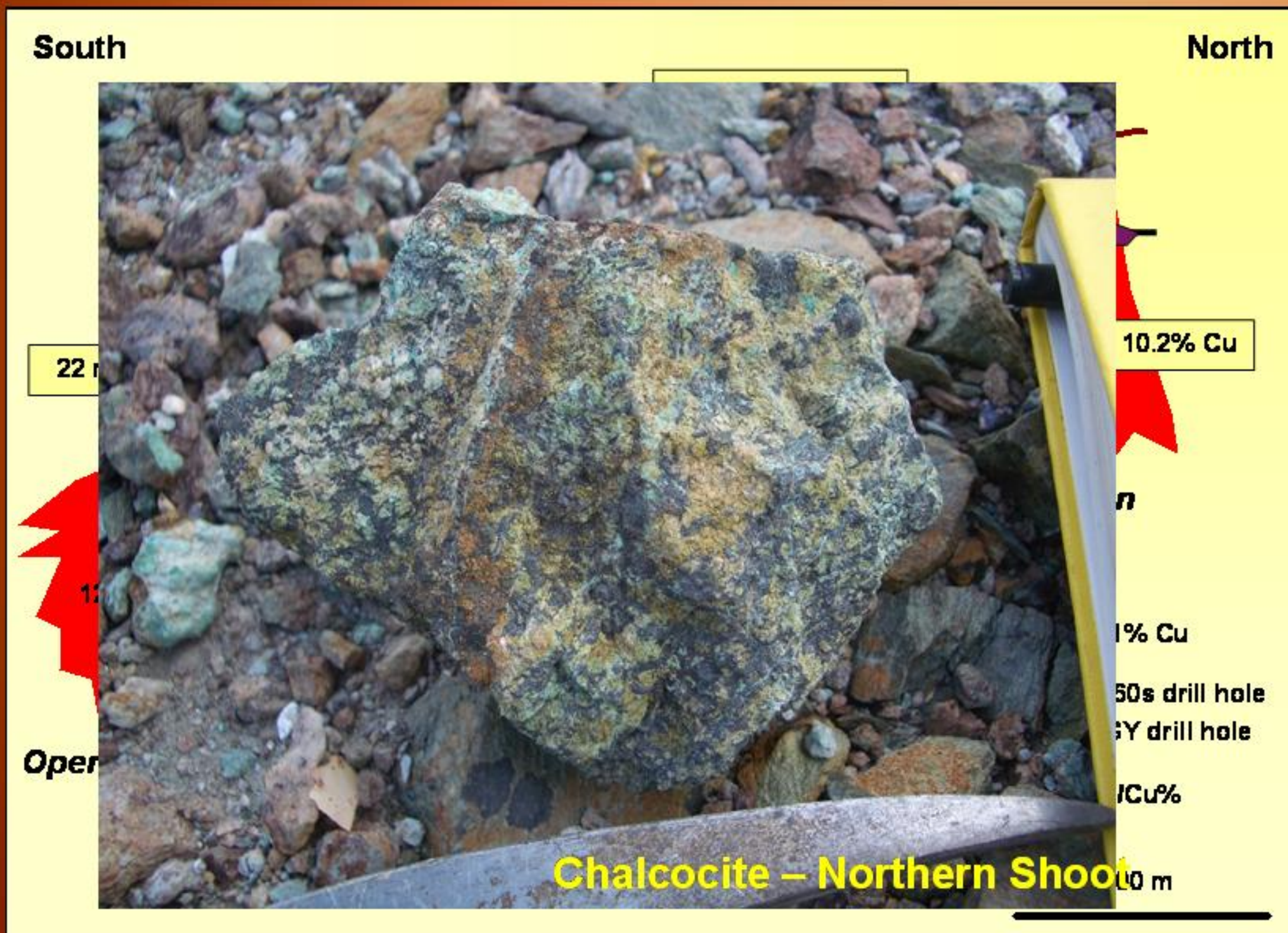


Diamond drilling Aug 2005

Greenvale – Maitland Copper-Molybdenum Prospect



Greenvale – Maitland Supergene Copper



Greenvale – Maitland Prospect – Future Work

Supergene Copper

- Identify potential for >50,000 tonnes @ > 5% Cu (Margin ~\$200 per tonne = ~\$10 million surplus)
- Phase 1 – 500 m RC percussion drilling (20 x 20 m) – **March 2006**
- Phase 2 – 2000 m RC percussion drilling (10 x 10 m) – **April/May**



2006 Primary Copper

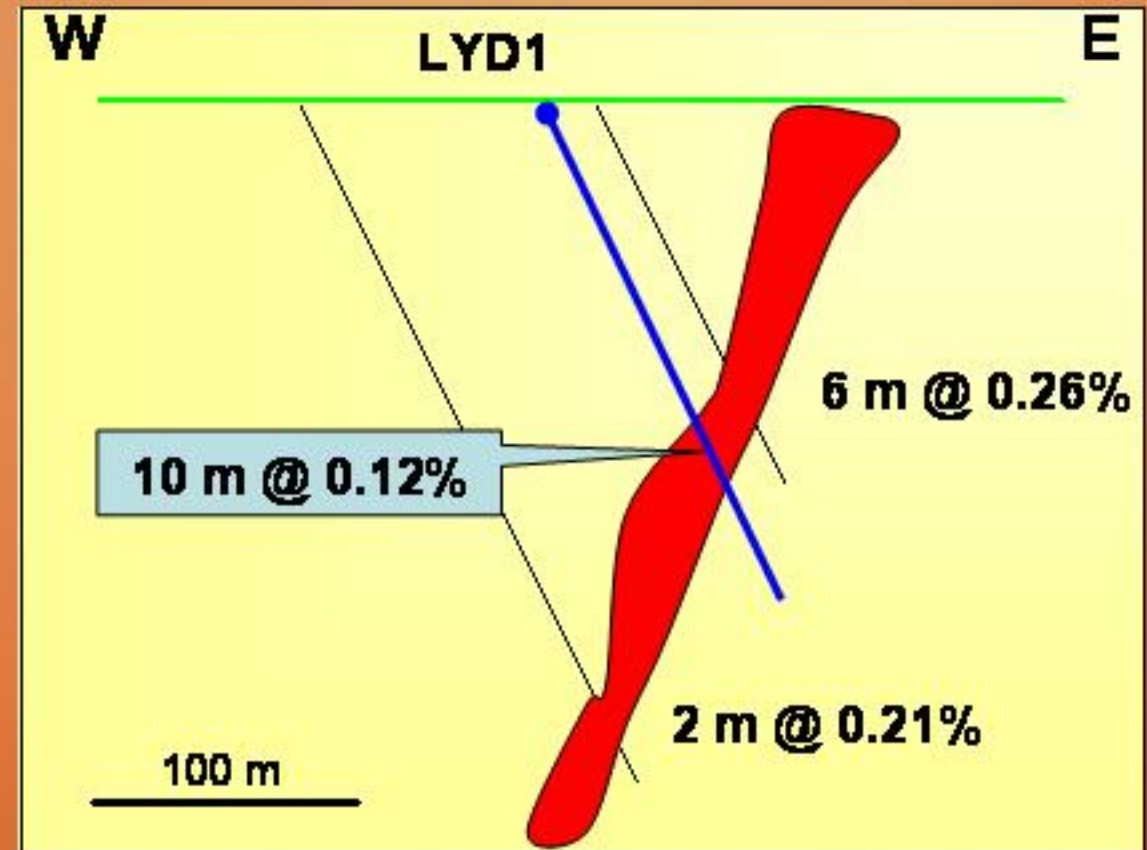
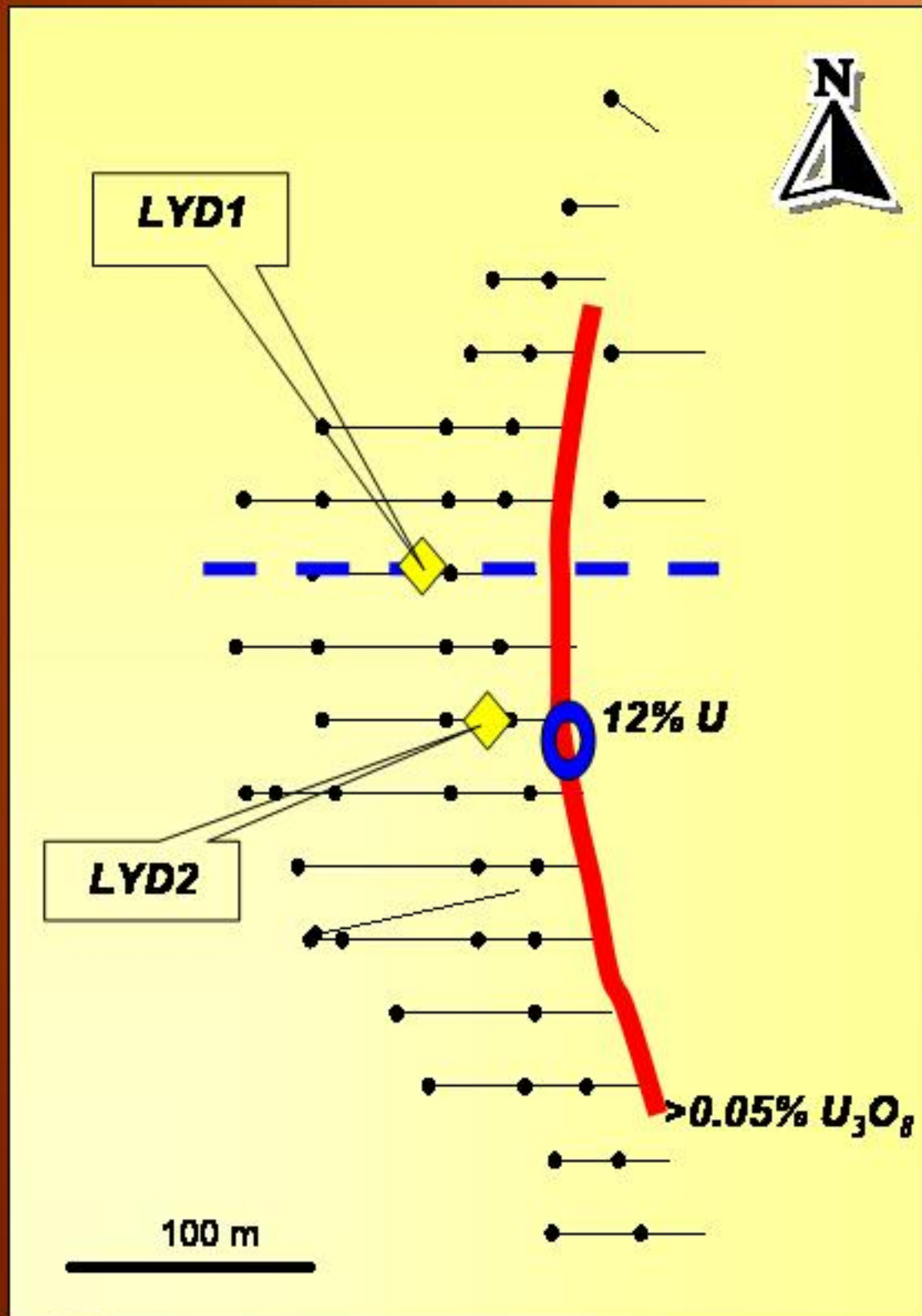
- Identify potential for >1,000,000 tonnes @ > 3% Cu
- Phase 1 – 2000 m RC percussion/diamond core drilling (50 x 50 m) – **April 2006**

Upside

- Limits of primary mineralisation not defined
- Molybdenum credits (eg 8 metres @ 0.43% Mo)
- Northern shoot untested
- Potential along strike to south beneath alluvial cover



Greenvale – Oasis Uranium Prospect

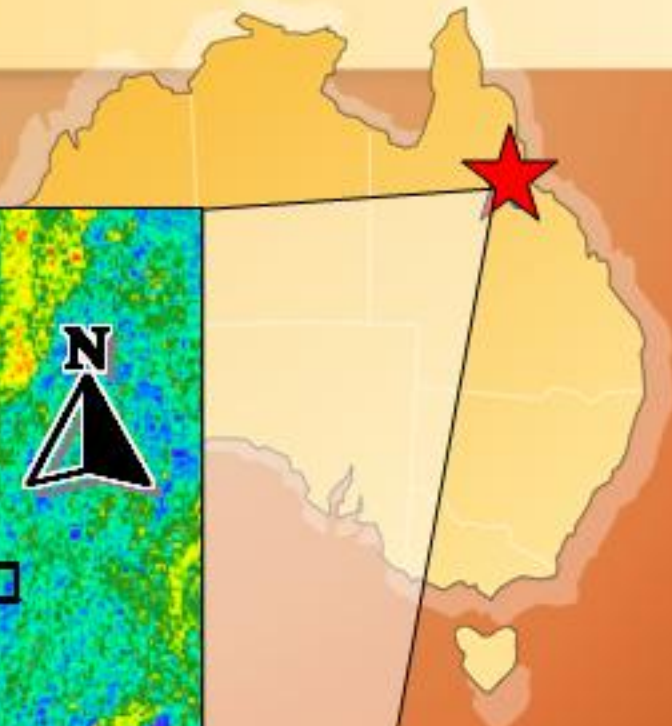
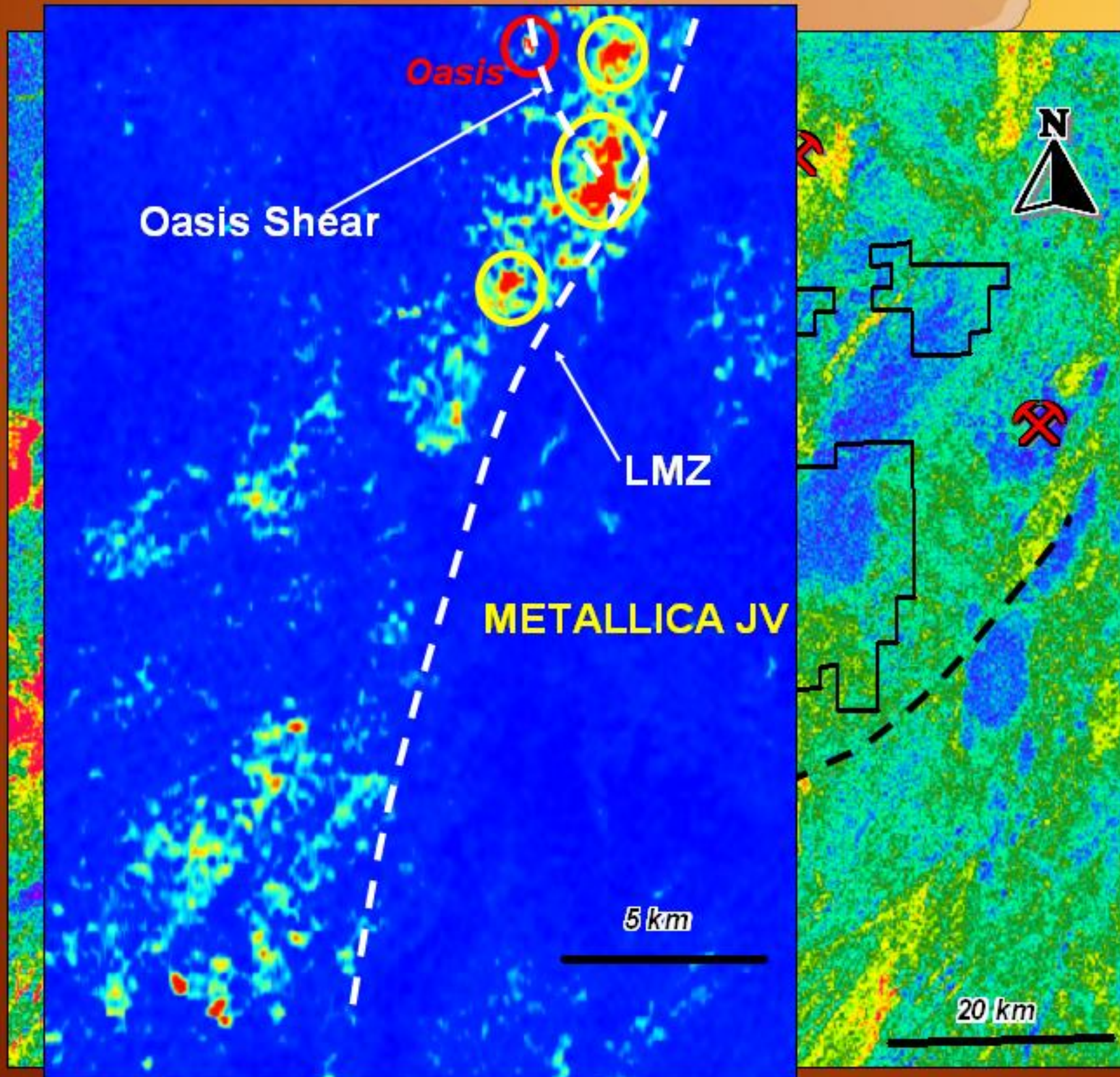


Cross Section

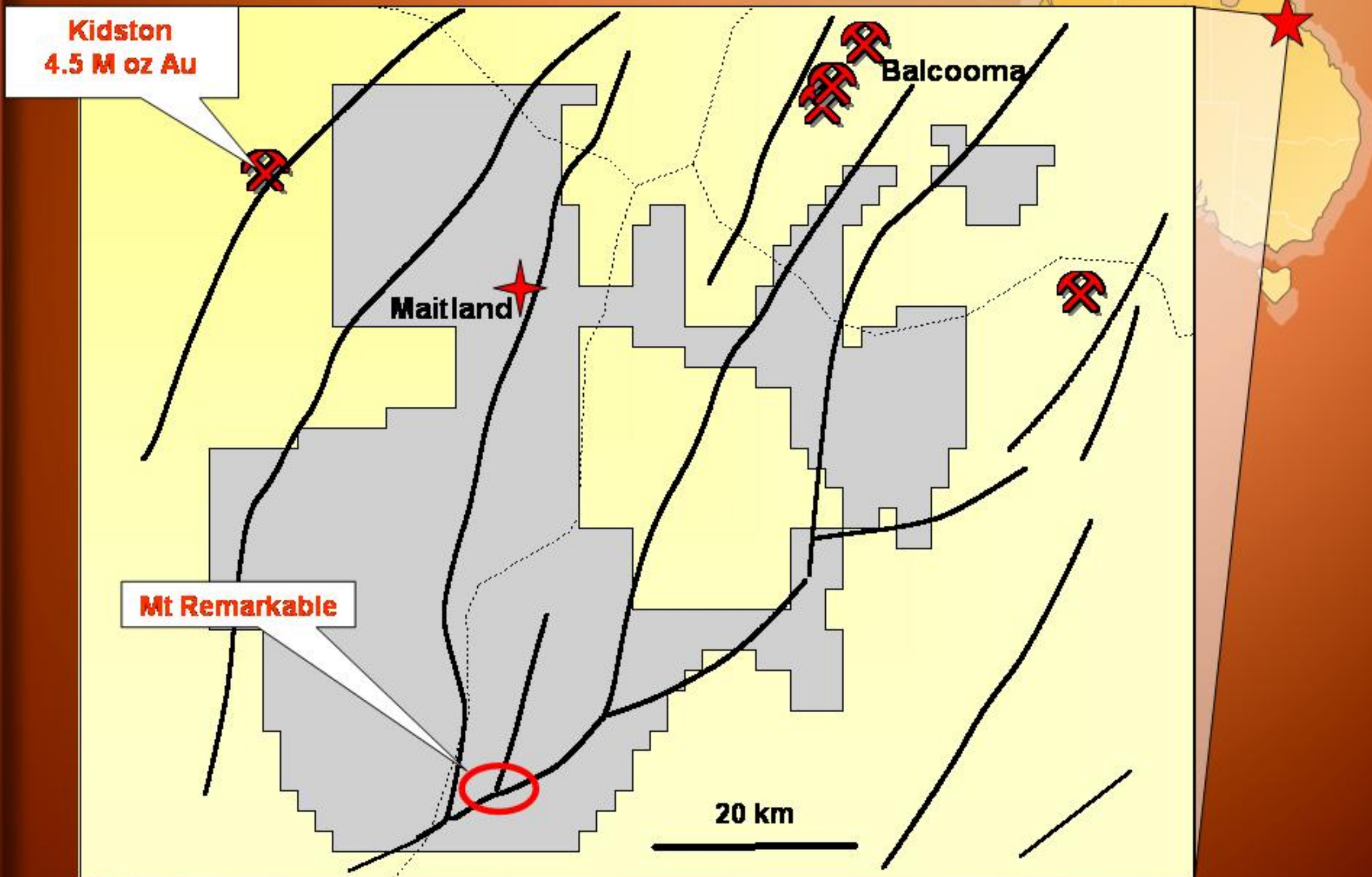


Mineralised Shear Zone

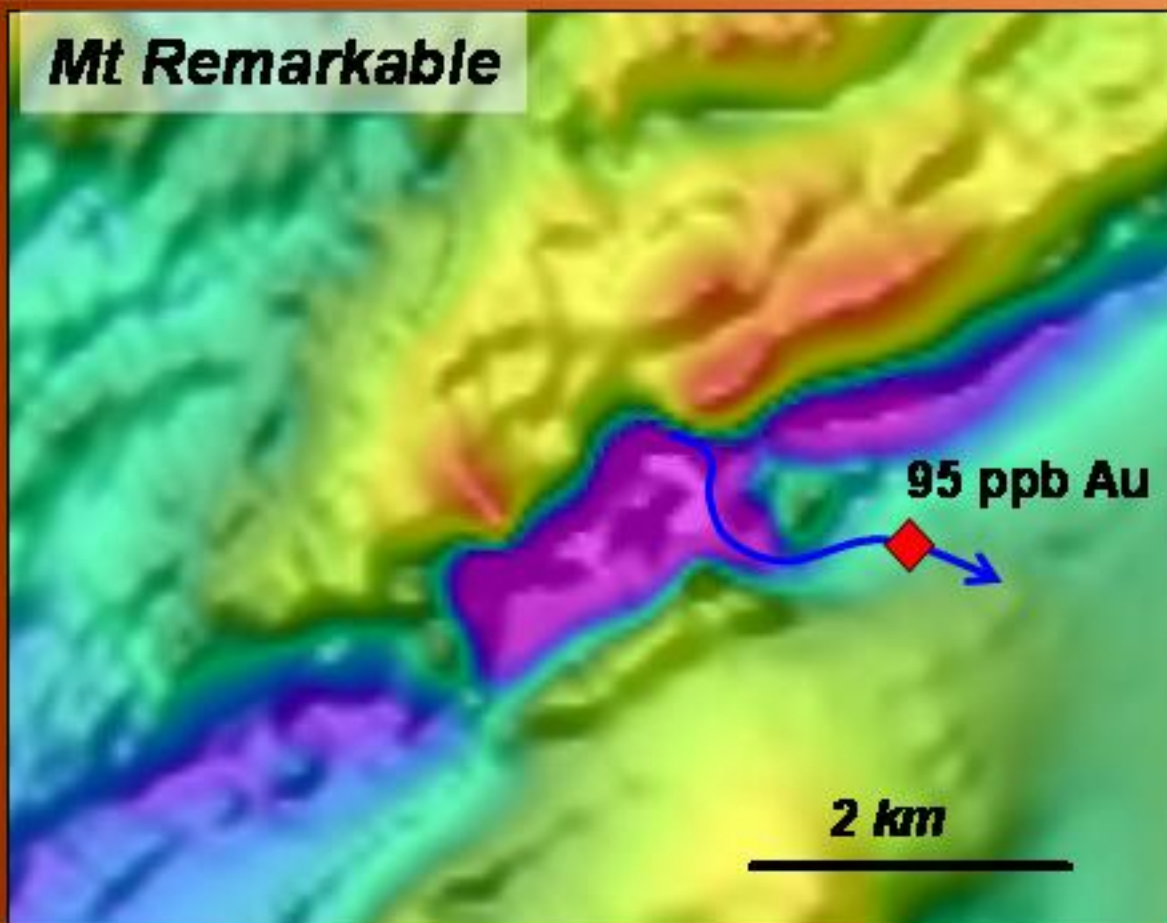
Greenvale – Metallica JV



Greenvale – Gold Potential



Greenvale – Mt Remarkable – Another Mt Leyshon?

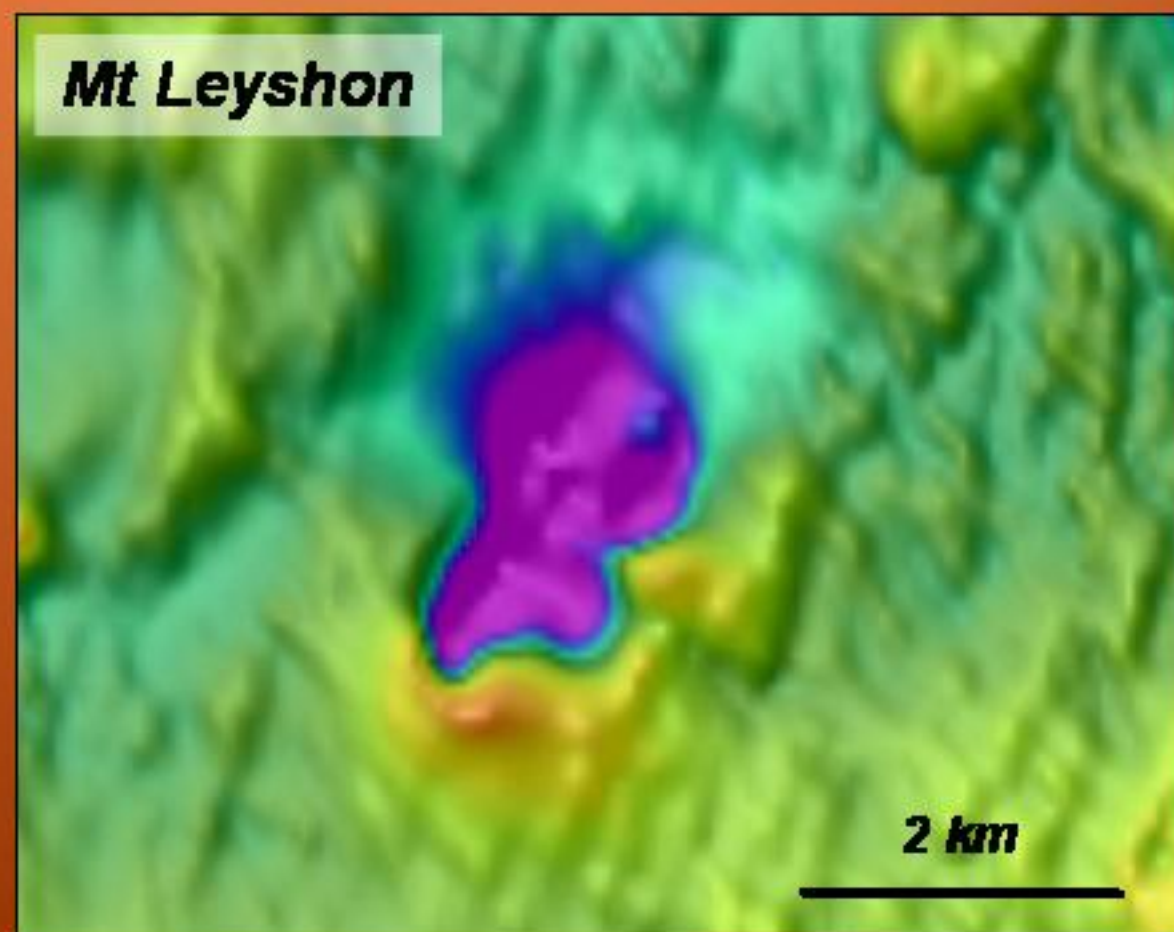


Mt Remarkable

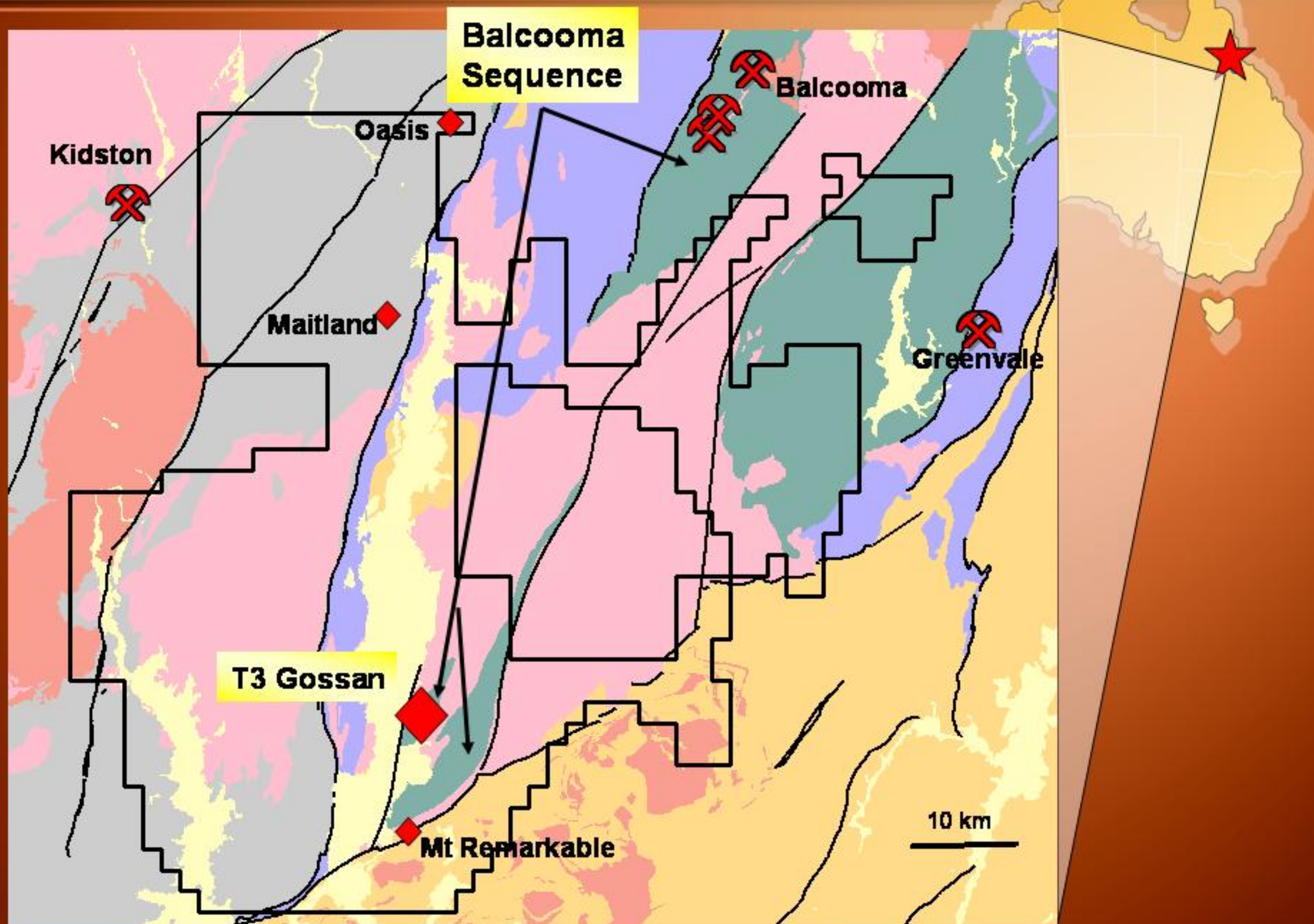
- Reversely polarised
- Breccia in streams
- Gold in streams
- No bedrock source located
- No drilling

Mt Leyshon

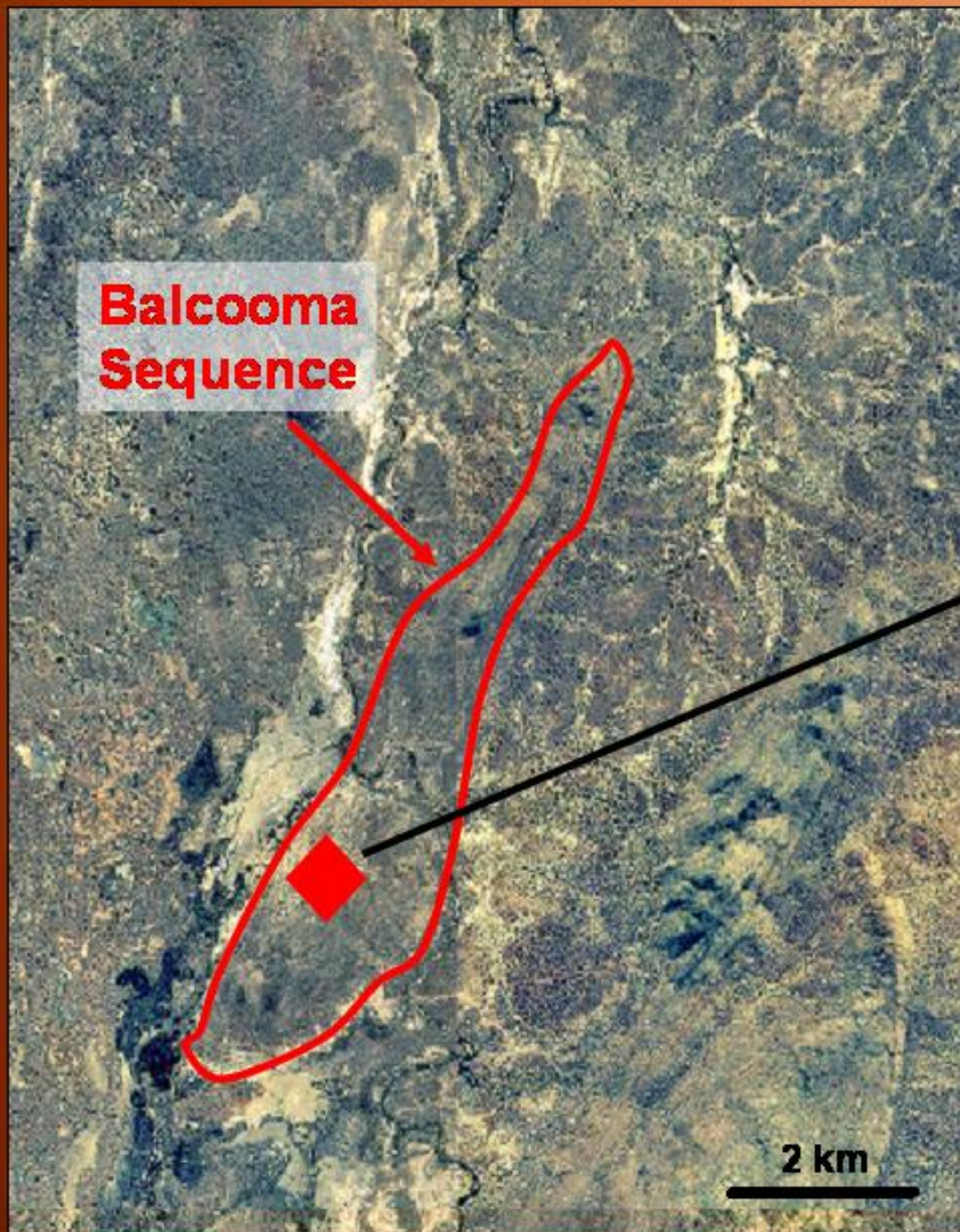
- 3.5 M oz gold deposit
- Reversely polarised
- Breccia hosted



Greenvale – T3 : Another Balcooma?



Greenvale – T3 Zinc-Lead-Silver Prospect



- Up to 8% Zn, 11% Pb and 52 g/t Ag in outcrop.
- Up to 0.83% Pb and 1.13% Zn in soils.
- 5km prospective stratigraphy
- No drilling

Uranium (Oasis and Metallica JV)

- Oasis diamond drilling (200 m) – April 2006
- 50 x 200 metre soil sampling – April 2006
- Reconnaissance sampling and prospecting (southern anomalies) – May

Gold (Mt Remarkable)

- 50 x 200 metre auger/soil sampling – May 2006
- First-pass reconnaissance aircore or RC drilling (500 – 1000 m)

Base Metals (T3)

- 50 x 200 metre soil sampling – May 2006
- Detailed gravity survey – April 2005
- RC drilling (400 metres) – June 2006



Glengarry Resources – Summary Budget 1H 2006

Prospect	Drilling	Target Generation	Budget
Maitland	\$580,000	\$80,000	\$660,000
Oasis/ Metallica JV	\$50,000	\$37,000	\$87,000
Mt Remarkable	\$30,000	\$50,000	\$80,000
T3	\$30,000	\$105,000	\$135,000
Other Projects (and fixed costs)	\$40,000	\$211,000	\$251,000
Total	\$730,000	\$483,000	\$1,213,000

Maitland Supergene – Maitland Primary – Oasis – Maitland Supergene – Mt Remarkable/T3

March 2006

April 2006

May 2006

June 2006

Glengarry Resources – Investment Criteria

- ◆ **Advanced prospects** ⇒ **Resource definition**
- ◆ **Regional potential**
- ◆ **Wholly owned, unencumbered projects**
- ◆ **Focussed, efficient explorers (65% in-ground expenditure 2002 - 2005)**
- ◆ **Multiple targets - Geographical focus**
- ◆ **Good infrastructure**
- ◆ **Low sovereign risk**
- ◆ **Adequate funding**





G L E N G A R R Y