

## Jaguar: a globally significant nickel sulphide project for a clean energy future

Developing a long-life nickel project in the heart of Brazil's premier Carajás Mineral Province



# Disclaimer



- This presentation does not constitute investment advice. Neither this presentation nor the information contained in it constitutes an offer, invitation, solicitation or recommendation in relation to the purchase or sale of shares in any jurisdiction. This presentation does not take into account any person's particular investment objectives, financial resources or other relevant circumstances and the opinions and recommendations in this presentation are not intended to represent recommendations of particular investments to particular persons. All securities transactions involve risks, which include (among others) the risk of adverse or unanticipated market, financial or political developments.
- To the fullest extent permitted by law, the Company does not make any representation or warranty, express or implied, as to the accuracy or completeness of any information, statements, opinions, estimates, forecasts or other representations contained in this presentation. No responsibility for any errors or omissions from this presentation arising out of negligence or otherwise is accepted.
- This presentation may include forward looking statements. Forward looking statements are only predictions and are subject to risks, uncertainties and assumptions which are outside the control of Centaurus Metals. These risks, uncertainties and assumptions include commodity prices, currency fluctuations, economic and financial market conditions in various countries and regions, environmental risks and legislative, fiscal or regulatory developments, political risks, project delay or advancement, approvals and cost estimates. Actual values, results or events may be materially different to those expressed or implied in this presentation. Given these uncertainties, readers are cautioned not to place reliance on forward looking statements. Any forward-looking statements in this presentation speak only at the date of issue of this presentation. Subject to any continuing obligations under applicable law and the ASX Listing Rules, Centaurus Metals does not undertake any obligation to update or revise any information or any of the forward looking statements in this presentation or any changes in events, conditions or circumstances on which any such forward looking statement is based.
- The Scoping Study referred to in this presentation has been undertaken for the purpose of initial evaluation of a potential development of the Jaguar Nickel Sulphide Project. It is a preliminary technical and economic study ( $\pm 40\%$ ) of the potential viability of the Jaguar Nickel Sulphide Project. The Scoping Study outcomes, Production Target and forecast financial information referred to in this presentation are based on low accuracy level technical and economic assessments that are insufficient to support estimation of Ore Reserves. While each of the modifying factors was considered and applied, there is no certainty of eventual conversion to Ore Reserves or that the Production Target itself will be realised. Further exploration and evaluation work and appropriate studies are required before Centaurus will be in a position to estimate any Ore Reserves or to provide any assurance of an economic development case.
- Assumptions also include assumptions about the availability of funding. While Centaurus considers that all the material assumptions are based on reasonable grounds, there is no certainty that they will prove to be correct or that the range of outcomes indicated by this study will be achieved. To achieve the range of outcomes indicated in the Scoping Study, pre-production funding in the order of US\$178M will likely be required. There is no certainty that Centaurus will be able to source that amount of funding when required. It is also possible that such funding may only be available on terms that may be dilutive to or otherwise affect the value of Centaurus's shares. It is also possible that Centaurus could pursue other value realisation strategies such as a sale, partial sale or joint venture of the Jaguar Nickel Sulphide Project. This could materially reduce Centaurus's proportionate ownership of the Jaguar Nickel Sulphide Project.
- The information in this report that relates to Exploration Results is based on information compiled by Mr Roger Fitzhardinge who is a Member of the Australasia Institute of Mining and Metallurgy. Mr Fitzhardinge is a permanent employee and shareholder of Centaurus Metals Limited. Mr Fitzhardinge has sufficient experience which is relevant to the style of mineralisation and type of deposit under consideration and to the activity which he is undertaking to qualify as a Competent Person as defined in the 2012 Edition of the 'Australasian Code for Reporting of Exploration Results, Mineral Resources and Ore Reserves'. Mr Fitzhardinge consents to the inclusion in the report of the matters based on his information in the form and context in which it appears.
- The information in this report that relates to the March 2021 Jaguar Mineral Resources is based on information compiled by Mr Lauritz Barnes (consultant with Trepanier Pty Ltd) and Mr Roger Fitzhardinge (a permanent employee and shareholder of Centaurus Metals Limited). Mr Barnes and Mr Fitzhardinge are both members of the Australasian Institute of Mining and Metallurgy. Mr Barnes and Mr Fitzhardinge have sufficient experience of relevance to the styles of mineralisation and types of deposits under consideration, and to the activities undertaken to qualify as Competent Persons as defined in the 2012 Edition of the Joint Ore Reserves Committee (JORC) Australasian Code for Reporting of Exploration Results, Mineral Resources and Ore Reserves. Specifically, Mr Fitzhardinge is the Competent Person for the database (including all drilling information), the geological and mineralisation models plus completed the site visits. Mr Barnes is the Competent Person for the construction of the 3-D geology / mineralisation model plus the estimation. Mr Barnes and Mr Fitzhardinge consent to the inclusion in this report of the matters based on their information in the form and context in which they appear.
- The company confirms that it is not aware of any new information or data that materially affects the information included in the original market announcements and, in the case of estimates of Mineral Resources, that all material assumptions and technical parameters underpinning the estimates in the original market announcements continue to apply and have not materially changed. The Company confirms that the form and context in which the competent persons findings have not been materially modified from the original announcement.
- This presentation contains information extracted from the Company's ASX market announcement dated 29 March 2021 which is available on the Company's website at [www.centaurus.com.au](http://www.centaurus.com.au). The Company confirms that all material assumptions underpinning the Jaguar Project Scoping Study as detailed in the ASX market announcement of 29 March 2021 continue to apply and have not materially changed.

# Centaurus Metals

## Our vision



Underpinned by a high-quality asset at Jaguar, we are well placed to deliver on our aspiration to be a clean and efficient **20,000-plus tonne per annum nickel** producer by the end of 2024 to assist in the global transition to electrification and to meet anticipated surging demand for key battery metals.

# Centaurus Metals

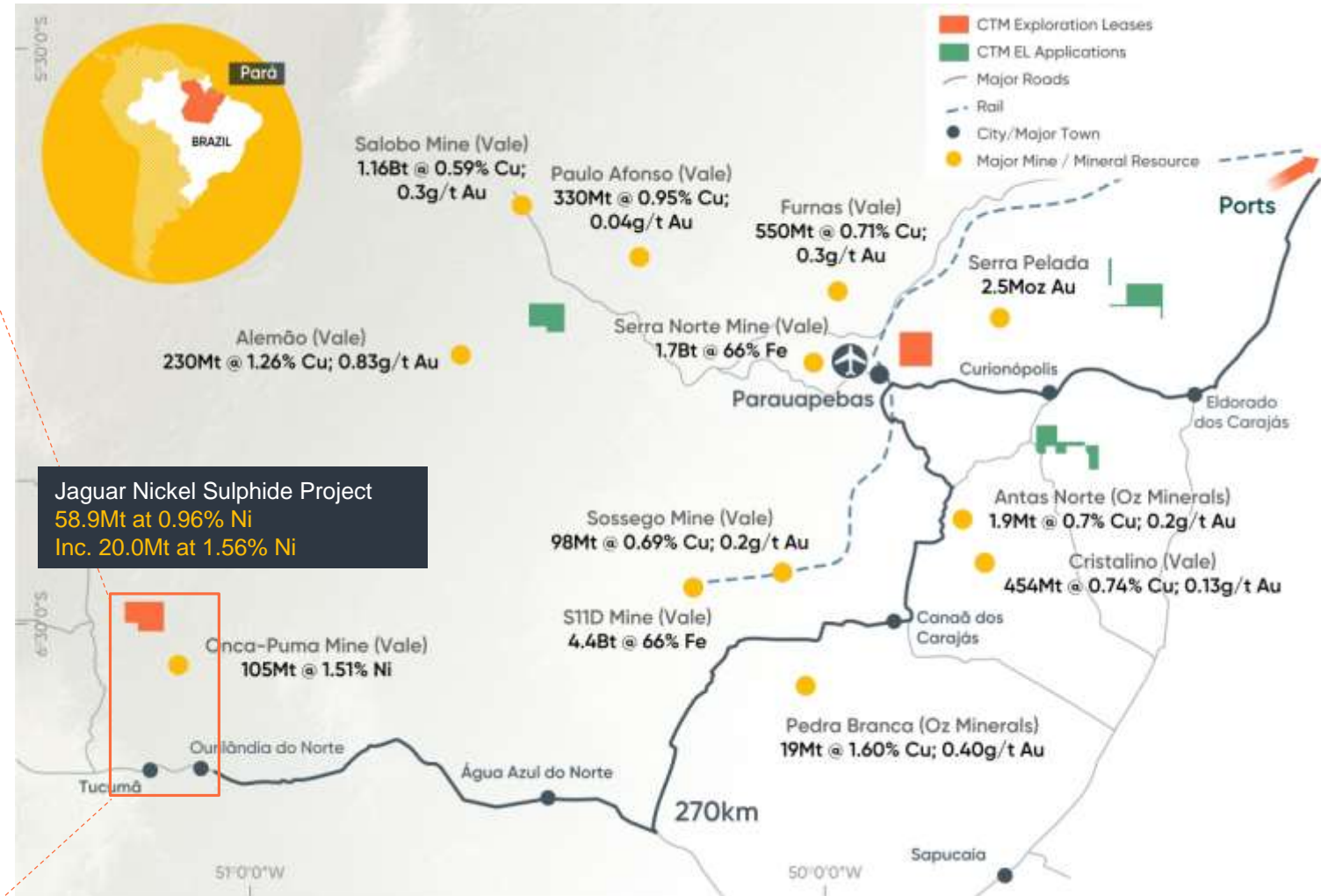


A compelling nickel investment for an inevitable clean energy future

<b>Infrastructure rich, World-class Carajás Mineral Province, Brazil</b>	<b>Post Tax NPV<sub>8</sub> A\$604 Million with IRR of 54%</b>	<b>Low C1 Cash Costs US\$2.41/lb</b>	<b>Payback – after tax 1.9 years</b>
<b>JORC Mineral Resource 58.9Mt @ 0.96% Ni for 562,600t Ni Metal</b>	<b>Mill Feed 24.0Mt @ 1.08% Ni for 260,300t Ni Metal</b>	<b>Total Revenue US\$2.42 Billion @ US\$7.50/lb nickel price</b>	<b>Development Capital US\$178 Million (incl US\$24M contingency)</b>
<b>Jaguar is set to deliver +20,000 tonnes per annum of clean and low-cost Class-1 nickel in concentrate over initial 10 year mine life</b>			<b>MRE growth opportunities:  65,000m of Drilling in 2021 with 2/3 being Step- Out &amp; Greenfields Drilling</b>

# Brazil's Carajás Mineral Province

## A Tier-1 global mining province



The Carajás contains one of the globe's largest known concentrations of large-tonnage World-Class mineral deposits

# Brazil's Carajás Mineral Province

## Outstanding infrastructure and logistics



- High-Voltage (138kV) grid power **40km line** from Tucumã to site
- Brazil's national power grid runs on **+80% renewables**
- Low cost, clean power - **less than US\$0.10/kWh**

- Project located 40km north of Tucumã and Ourilândia do Norte (pop +70,000) – **mining communities with skilled workforce**
- 900km by road to Vila do Conde Free Access Port or rail to Sao Luis Port
- Ideally positioned to feed the **global battery supply chain**

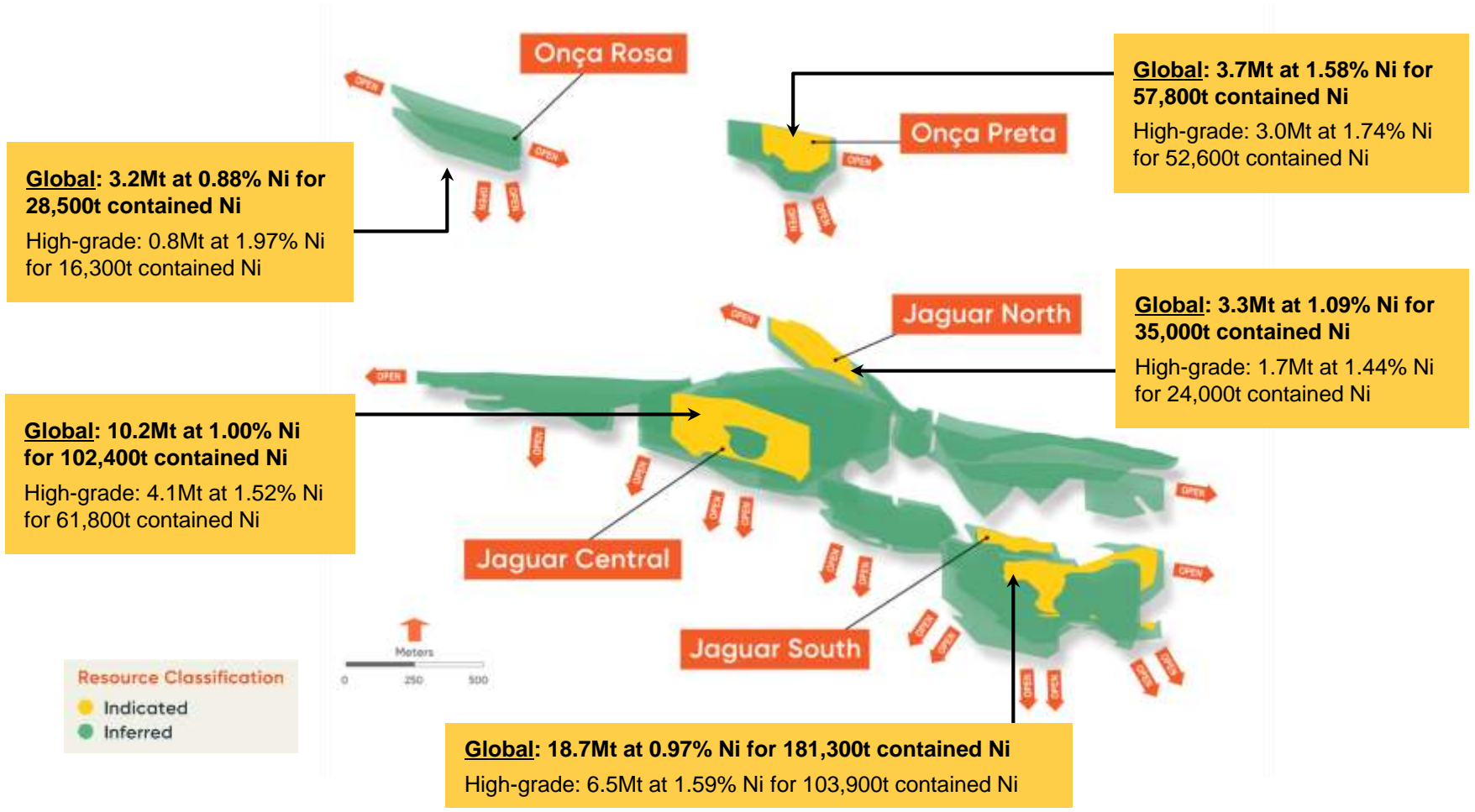




# Jaguar Project – Resource

## A large-tonnage, high-quality resource at surface

JORC Mineral Resource Estimate : **58.9Mt @ 0.96% Ni for 562,600 tonnes of contained nickel metal**



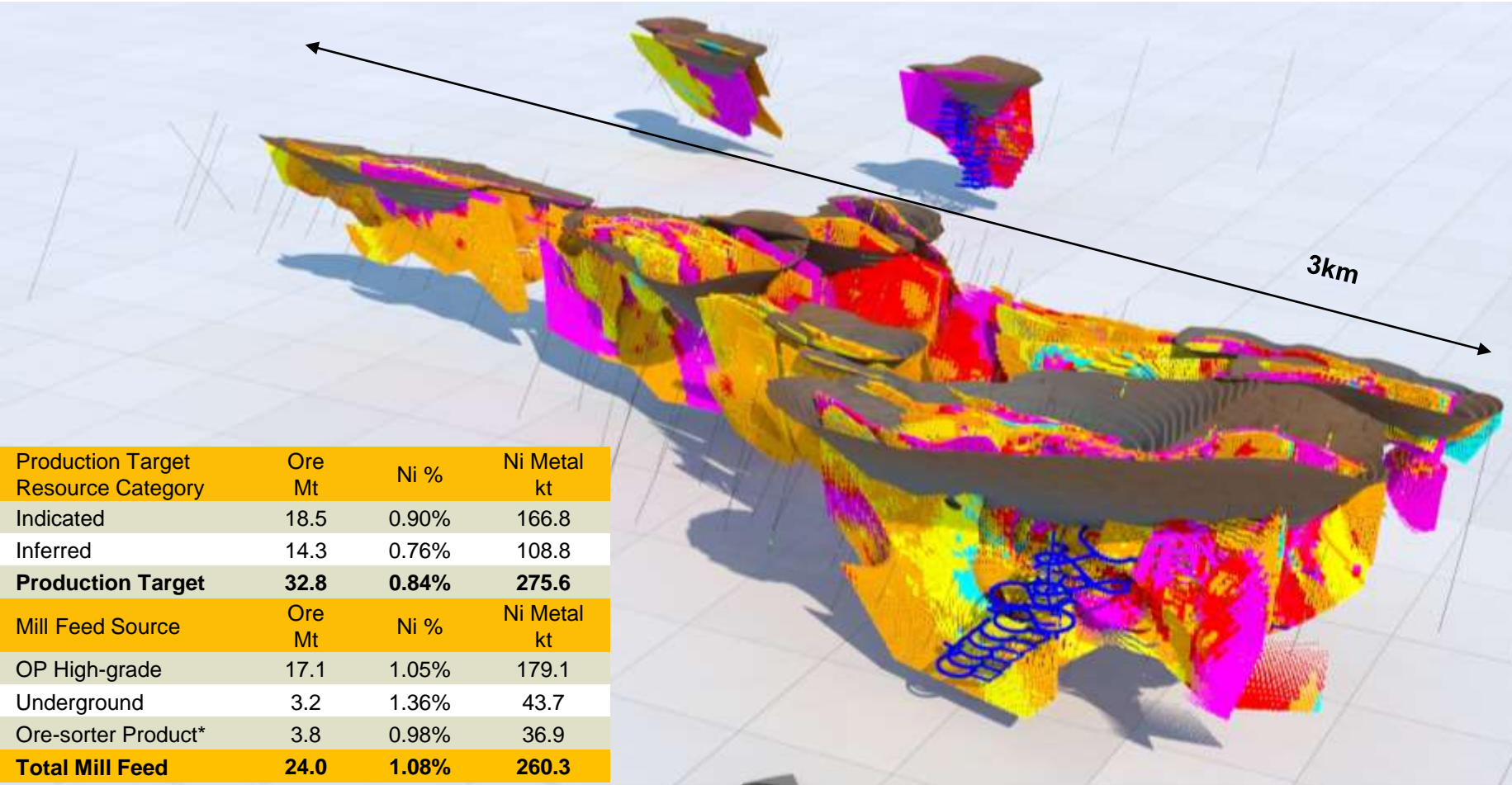
- JORC MRE based on +74,000m of diamond drilling
- 80% of MRE is within 200m of surface
- 40% of MRE (contained metal) is now in Indicated Category
- Mineralisation remains open at depth and along strike
- Significant potential to increase size of MRE with further drilling
- 4 x Diamond rigs operating double shift.
- New RC drill contractor mobilising to site



# Jaguar Project – Mining

## Low-cost open pit & underground operations

Production Target: **32.8Mt @ 0.84% Ni** for 275,600 tonnes of contained nickel over initial 10 year mine life



- Independent Mining & Geotech studies were completed by Entech (Australia) & ReMetallica (Brazil);
- +80% of mill feed from open pit,
- **LOM strip-ratio of 6.0:1;**
- +60% of Mill Feed in Indicated Resource Category;
- UG presently only at Jaguar South & Onca Preta (starting year 4)
- **Outstanding opportunity to grow mine life from multiple sources**

Production Target Resource Category	Ore Mt	Ni %	Ni Metal kt
Indicated	18.5	0.90%	166.8
Inferred	14.3	0.76%	108.8
<b>Production Target</b>	<b>32.8</b>	<b>0.84%</b>	<b>275.6</b>
Mill Feed Source	Ore Mt	Ni %	Ni Metal kt
OP High-grade	17.1	1.05%	179.1
Underground	3.2	1.36%	43.7
Ore-sorter Product*	3.8	0.98%	36.9
<b>Total Mill Feed</b>	<b>24.0</b>	<b>1.08%</b>	<b>260.3</b>

*\*Ore-sorter product has been processed pre-concentrator; Totals are rounded to reflect acceptable precision, subtotals may not reflect global totals.*

Mill Feed: **24.0Mt @ 1.08% Ni** for 260,300 tonnes of contained nickel 8



# Jaguar Project – Processing Plant

## Base Case – Conventional flotation plant to treat 2.7Mtpa

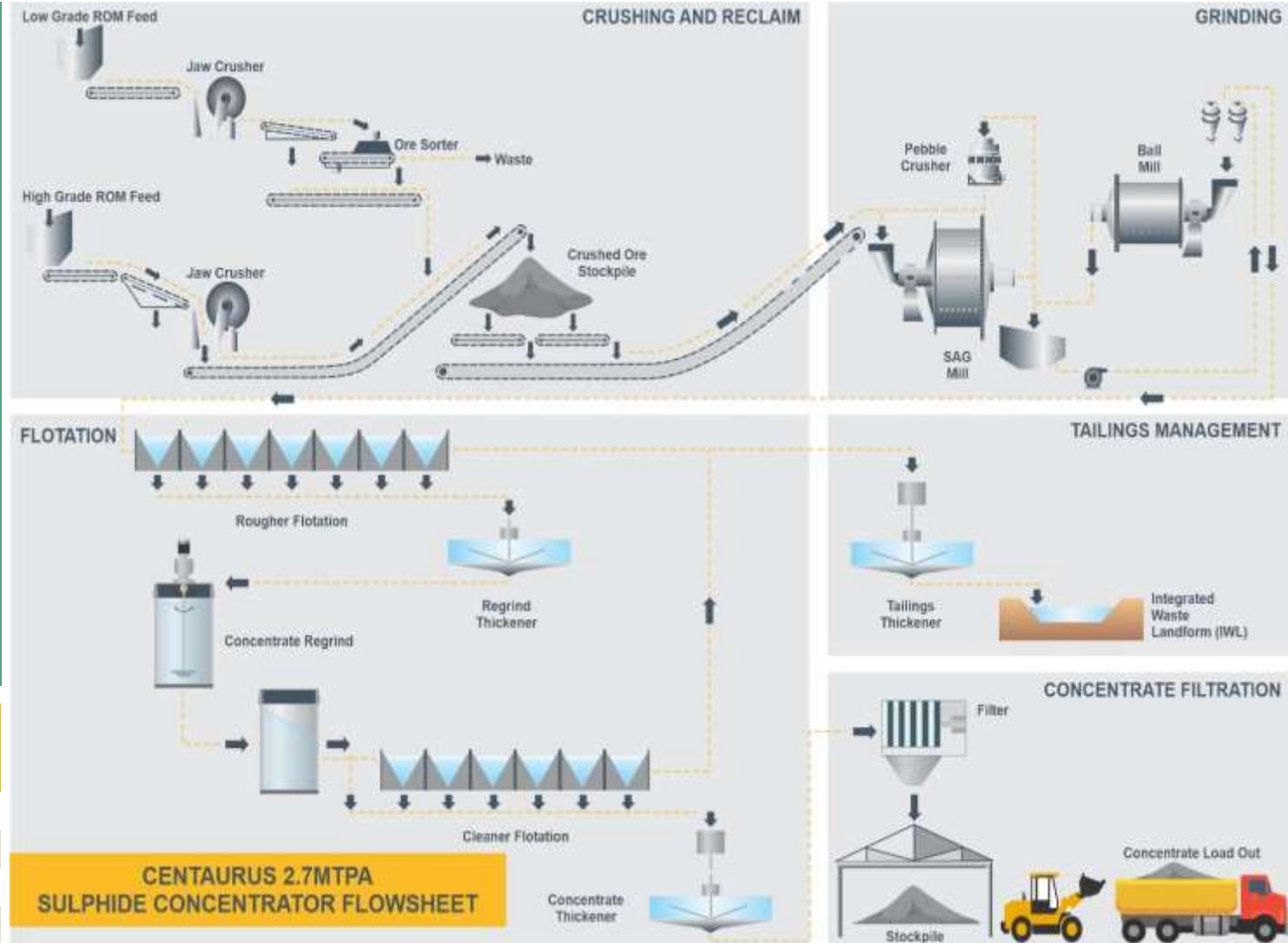


### Study Partners

- DRA Global - Independent plant engineering
- ALS - Metallurgical testwork
- Steinert - ore sorting pilot tests
- Pre-concentration ore-sorter stage to process low-grade material (~12Mt)
- Pilot testwork shows 0.47%Ni feed upgraded to 1.09% Ni with a 25% mass-recovery

### Metallurgy Results

- LOM mill recovery of **78%**
- High-quality **~16% nickel concentrate grade**
- **High Fe:MgO ratio (+9)** and low impurities



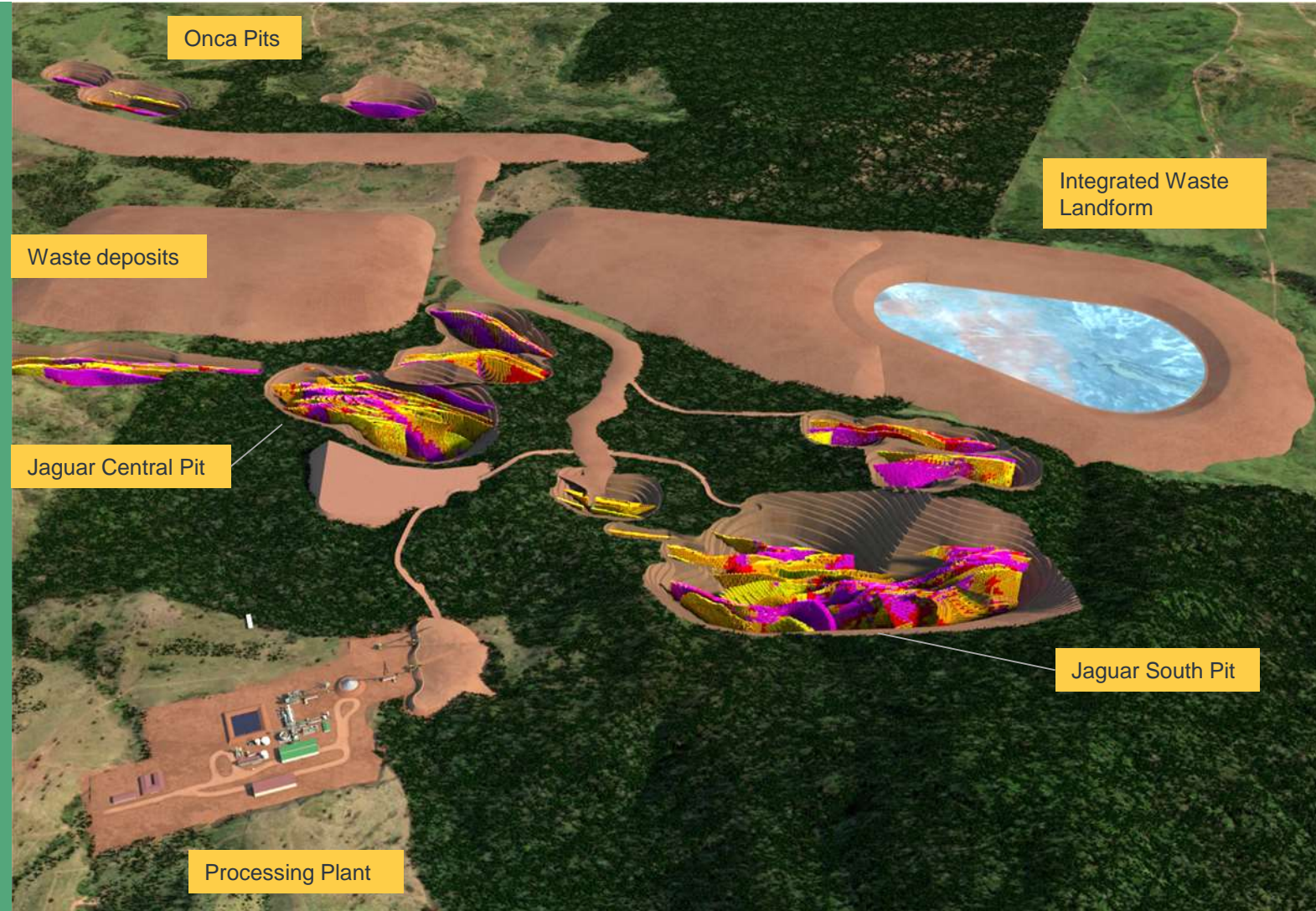
Deposit	% Ni Feed	% Non-sulphide Ni in Feed	Sulphide Ni Recovery	Total Ni Recovery
Jaguar South	1.08	0.14	90%	78%
Jaguar Central	1.03	0.15	90%	77%
Jaguar North	0.96	0.14	90%	77%
Onça Preta	1.17	0.13	90%	80%

# Jaguar Project – Non-Processing Infrastructure

## World's best-practice tailings management



- Tailings storage conceptual study completed by industry expert Chris Lane (L&MG SPL)
- Integrated Waste Landform (IWL) chosen as Tailings storage solution as this:
  - Optimises use of mine waste; and
  - Highest safety factor against embankment failure
- Power to be supplied to site by a 138kV transmission line from the national energy grid at Tucumã, **39km** from the Project
- More than **80% of grid power in Brazil generated from renewable sources**, mainly hydro power – low carbon emission footprint
- 40km access road between Tucumã and the project site to be upgraded



# Jaguar Project Scoping Base Case Study Results

## Real value from a high-grade sustainable operation



Base Case Scoping Study: Open pit and underground mining delivering ore to a **2.7Mtpa conventional nickel flotation plant**

Post Tax NPV<sub>8</sub>

**A\$604 Million**  
with IRR of 54%

Total Revenue

**US\$2.45 Billion**  
@US\$7.50/lb nickel price

LOM Average Annual  
Free Cash (pre-tax)

**US\$109 Million**

C1 Cash Costs

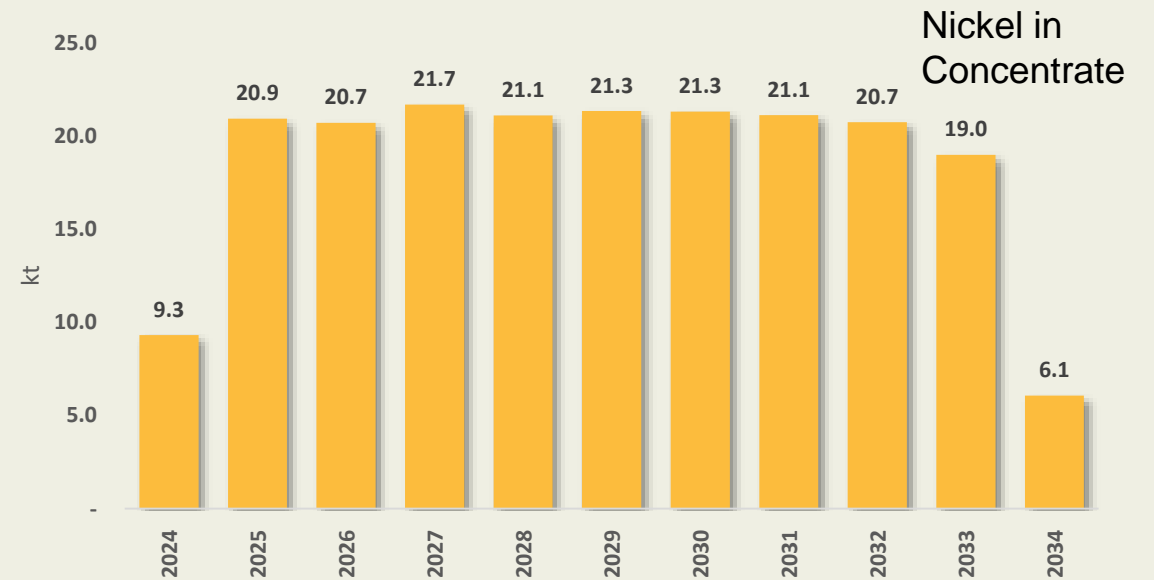
**US\$2.41/lb**

Development Capital

**US\$178 Million**  
(incl US\$24M contingency)

Payback – after tax

**1.9 years**



Presently defined Resources to Initially Deliver 203kt of Class-1 Nickel in Concentrate over 10 Year mine life

**At US\$9/lb LOM nickel price, post tax NPV<sub>8</sub> lifts to A\$1.01 billion with an IRR of 80%**

# Jaguar Project – Value-Add Case

## Scoping Study In Progress

### Value-adding opportunities

- **Scoping Study to consider value-adding opportunities** including Pressure Oxidation (POx) to produce nickel metal or nickel sulphate
- POx testing at ALS delivered excellent results - **extractions of nickel, copper and cobalt all exceeding 99%**
- Key economic drivers to the viability of the POx value-adding route are the Project's location in north-eastern Brazil, which means:
  - Access to **low-cost energy** (< US\$0.10/kWh)
  - and **clean energy** (+80% renewables)
  - Relatively **low-cost skilled labour market**
  - Access to **low-cost residue neutralisation material**
  - Availability of **high-quality fresh water**

Centaurus aspires to deliver a constant supply of **clean and sustainable Class-1 nickel** from the Jaguar Project over a long mine life.



# Jaguar Project – Approvals and Land Access

## Environmental licensing advancing well



### Environmental Approvals On-Track

- Significant amount of environmental data historically collected by Vale for use by CTM in approval process
- 100% of wet and dry season data collected for use in EIA/RIMA work
- **Majority of the project footprint already disturbed (pasture land)**
- Partnership in place with municipalities to upgrade roads
- Very strong community support for the project
- **Target date to lodge EIA/RIMA – Q2 2021**

### Land Access

- **Secured possession of two key properties that cover an area of 1,500 hectares for the long term benefit of the Project.**
- Significant de-risking step for the potential development of a future mining operation
- Negotiations well advanced for a further property



# Jaguar Project Targeted Development Timeline



Q1/2021 – MRE Upgrade & Scoping Study Results



Q2/2021 – Lodge Key Environmental Licence

Q1/2022 – Pre-Feasibility Study

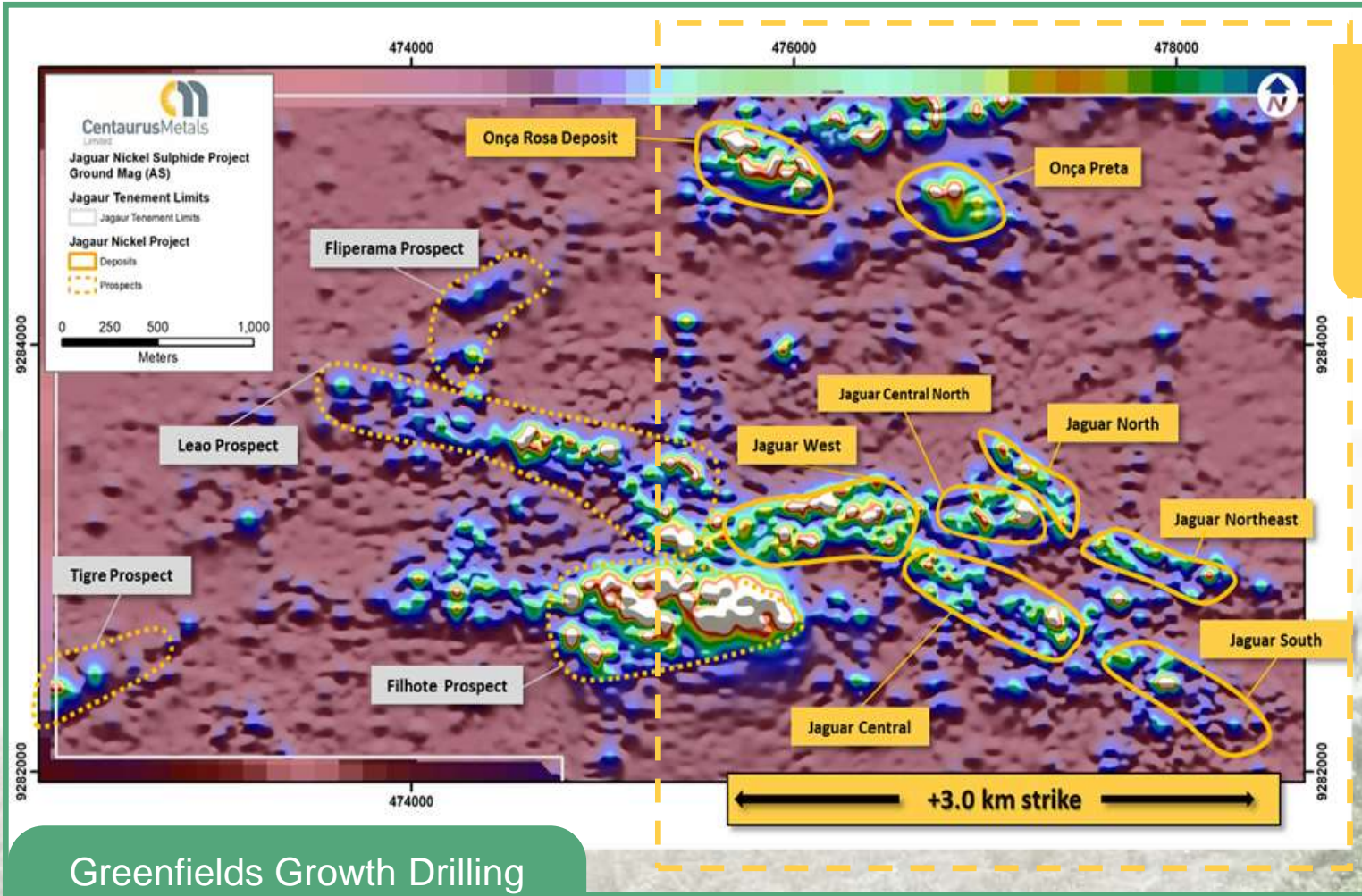
Q4/2022 – Definitive Feasibility Study

Q3/2023 – Formal Decision to Mine



# Jaguar Project – Growth and Upside

## 65km of development & growth drilling underway



Resource Development & Growth  
20km of in-fill and extensional drilling  
15km of step-out drilling  
5km of geotechnical & metallurgical drilling

Greenfields Growth Drilling  
25km drill program now underway

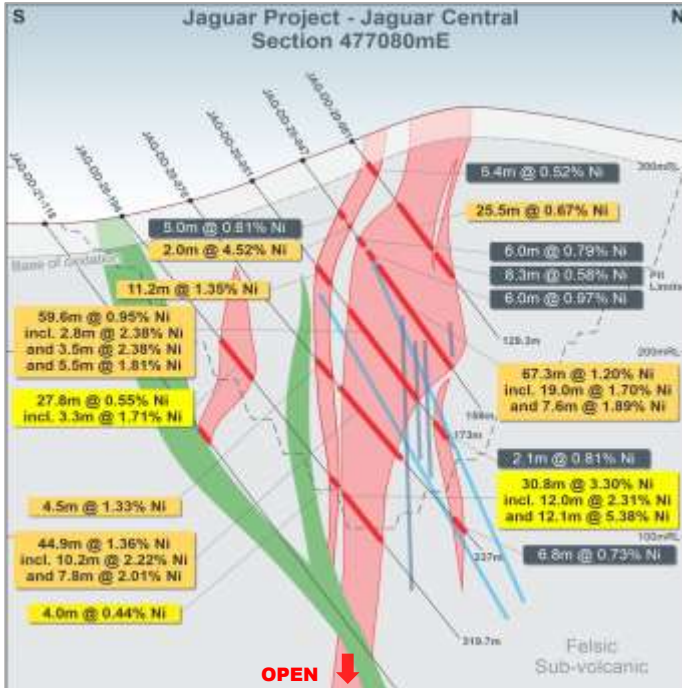


# Jaguar Project – Growth and Upside

Deep plumbing system remains open and untested



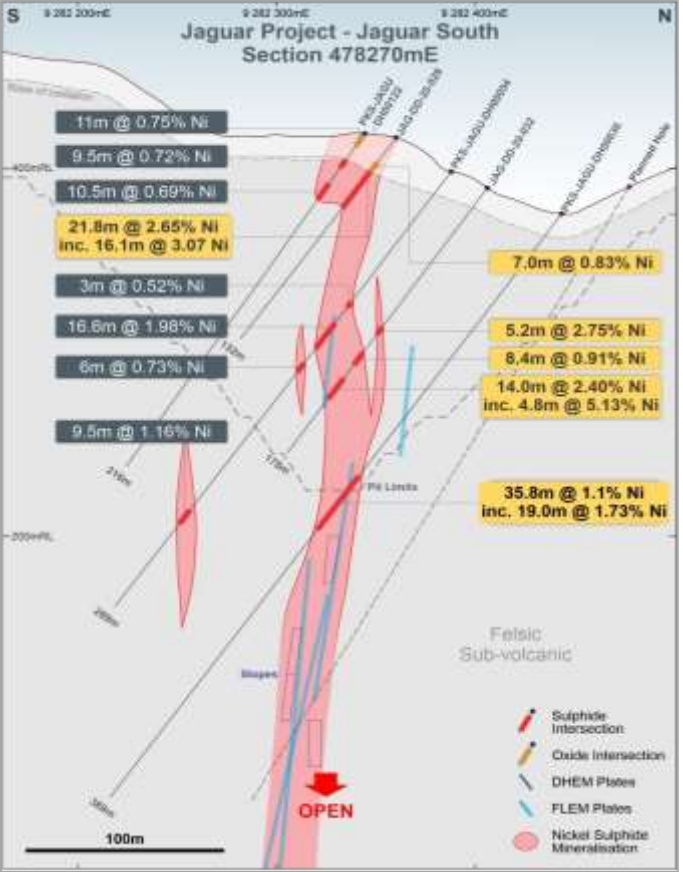
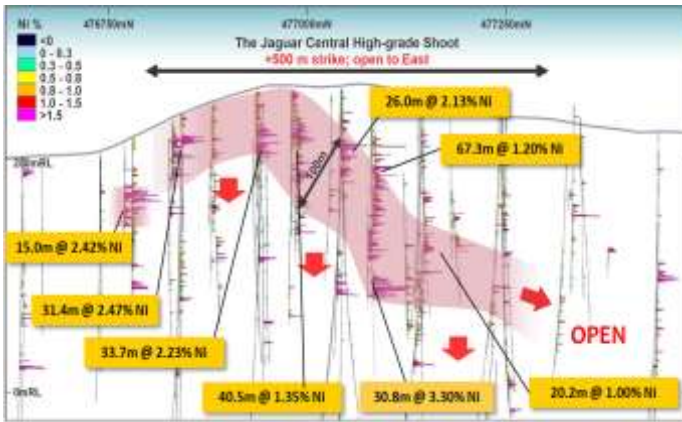
250m



**JAG-DD-20-104 – 195.3m to 207.4m down-hole  
12.1m at 5.38% Ni, 0.31% Cu and 0.09% Co**



Untested



**DHEM to drive deep massive sulphide discoveries**

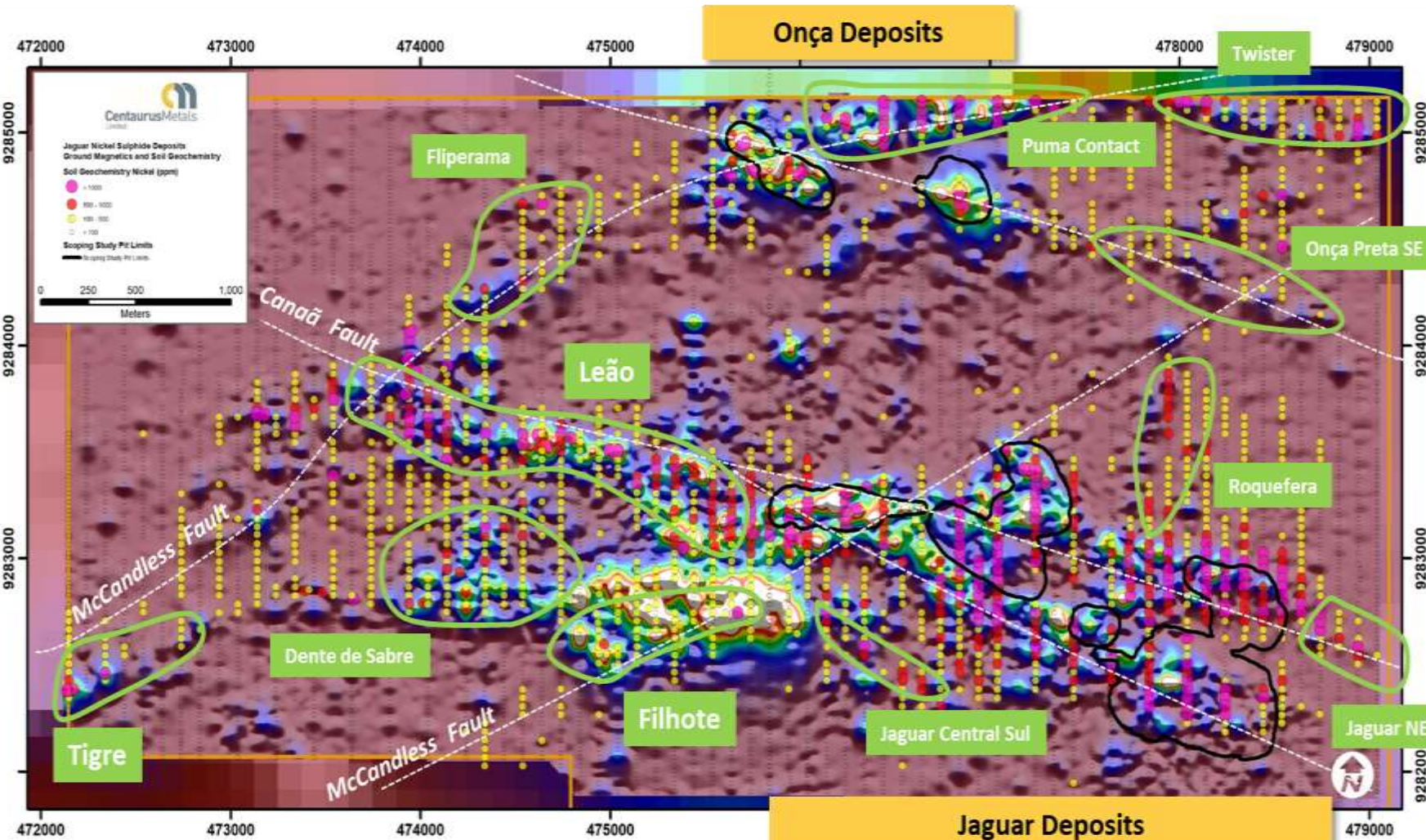
300m

Untested



# Jaguar Project – Growth and Upside

## Near-mine greenfields exploration upside



**25,000m**  
Greenfields RC drill program underway

- **+10** untested prospects
- Coincident targets from
  - **GeoTEM**
  - **Fixed Loop EM**
  - **Ground Mag**
  - **Geochem**
- **FLEM & DHEM** – ongoing
- **Soil sampling & mapping** – ongoing

Targeting new discoveries that can come into the open pit mine plan

# Corporate Summary



Capital Structure	May 2021
Shares on Issue	337.7m
Listed Options (EP \$0.18, Exp 31/5/21)	19.5m
Unlisted Options	13.1m
Top 20 Holders	62.9%
Market Capitalisation (\$0.70)	A\$236.4m
Cash as at 31 March 2021	A\$19.7m
Other Significant Assets	Jambreiro Iron Ore Project

## Board and Management Team – Extensive Brazil & Nickel Sulphide Experience

Didier Murcia	Chair
Darren Gordon	Managing Director
Bruno Scarpelli (Brazil)	Executive Director and Brazil Country Manager
Mark Hancock	Non-Executive Director
Chris Banasik	Non-Executive Director
Roger Fitzhardinge	Operations Manager - Nickel
John Westdorp	Chief Financial Officer
Gadius Montresor (Brazil)	Exploration Manager
Antonio Kalil (Brazil)	Environmental Manager
Antonio Campos (Brazil)	OHS Manager
John Knoblauch	Principal Metallurgist
Rocky Osborne	Principal Geoscientist

Substantial Shareholders		
Sprott Inc.		10.6%
McCusker Holdings Pty Ltd		9.3%
Dundee Corporation		5.1%
Terrativa Minerais		4.8%
Board and Management		4.0%
Broker Research		Date
Sprott	Brock Salier	21 April 2021
Argonaut	George Ross	20 April 2021
Euroz Hartleys	Jon Bishop	30 March 2021



# Centaurus

## Key investment takeaways

- **Nickel focus** – sustainable high-grade nickel sulphide asset leveraged to strong long-term Class-1 nickel market outlook
- **Favourable infrastructure-rich project location** – the world-class Carajás Mineral Province
- **Globally Significant Maiden JORC Resource** – 58.9Mt at 0.96% Ni for 562,600 tonnes of contained nickel including **Indicated component of 20.1Mt at 1.12% Ni for 225,800t** of contained nickel
- **Base Case Scoping Study** considers a conventional flotation plant to treat **2.7Mtpa** with Mill Feed of **24.0Mt @ 1.08% Ni for 260,300t** of nickel to produce **+20ktpa of nickel** in concentrate over an initial mine life of **10 years**
- **Low capital intensity (US\$178 million)** and **low operating costs (US\$2.41/lb)**;
- **Strong returns: Post-tax NPV<sub>8</sub> of ~AS\$604 million (US\$453 million) with a post-tax IRR of ~54%**
- **Value-Add Scoping Study nearing completion**
- **Outstanding growth potential** – deposits open at depth and along strike with further drilling underway; multiple greenfields prospects with walk-up drill targets (65km of drilling in 2021)
- **Well funded** – \$19.7 million in cash at end of March 2021 with well ITM options of \$4.8 million due end of May

**Centaurus represents a rare opportunity to invest in a rapidly unfolding high-grade nickel sulphide growth story in Brazil, at the perfect time in the nickel market cycle.**

## Jaguar: a globally significant nickel sulphide project for a clean energy future

RRS Lunch Series | May 2021  
Darren Gordon, Managing Director

Contact us

office@centaurus.com.au.au  
(+61) 8 6424 8420

Follow our communications:

**LinkedIn** : Centaurus Metals  
**twitter** : @CentaurusMetals



# Centaurus

## March 2021 JORC MRE & Scoping Study Production Target



Deposit	Resource Category	Tonnes Mt	Grade			Contained Metal kt		
			Ni %	Cu %	Co ppm	Ni	Cu	Co
Jaguar South	IND	7.4	1.19	0.06	239	87.4	4.2	1.8
	INF	11.3	0.83	0.04	184	93.9	4.3	2.1
	<b>Total</b>	<b>18.7</b>	<b>0.97</b>	<b>0.05</b>	<b>206</b>	<b>181.3</b>	<b>8.6</b>	<b>3.9</b>
Jaguar Central	IND	8.4	0.99	0.06	267	83.1	5.2	2.2
	INF	1.8	1.06	0.06	269	19.3	1.1	0.5
	<b>Total</b>	<b>10.2</b>	<b>1.00</b>	<b>0.06</b>	<b>268</b>	<b>102.4</b>	<b>6.3</b>	<b>2.7</b>
Jaguar North	IND	2.3	1.08	0.14	349	24.5	3.2	0.8
	INF	1.0	1.12	0.28	353	11.4	2.8	0.4
	<b>Total</b>	<b>3.3</b>	<b>1.09</b>	<b>0.18</b>	<b>350</b>	<b>35.9</b>	<b>6.0</b>	<b>1.2</b>
Jaguar Central North	INF / Total	<b>5.8</b>	<b>0.80</b>	<b>0.05</b>	<b>210</b>	<b>46.7</b>	<b>3.0</b>	<b>1.2</b>
Jaguar Northeast	INF / Total	<b>8.3</b>	<b>0.78</b>	<b>0.09</b>	<b>253</b>	<b>64.9</b>	<b>7.3</b>	<b>2.1</b>
Jaguar West	INF / Total	<b>5.7</b>	<b>0.80</b>	<b>0.04</b>	<b>150</b>	<b>45.2</b>	<b>2.1</b>	<b>0.9</b>
Jaguar Deposits	INF	18.0	1.08	0.07	266	195.0	12.6	4.8
	IND	34.0	0.83	0.06	209	281.3	20.8	7.1
	<b>Total</b>	<b>52.0</b>	<b>0.92</b>	<b>0.06</b>	<b>229</b>	<b>476.3</b>	<b>33.4</b>	<b>11.9</b>
Onça Preta	INF	2.1	1.47	0.11	762	30.9	2.3	1.6
	IND	1.6	1.71	0.05	236	27.0	0.8	0.4
	<b>Total</b>	<b>3.7</b>	<b>1.58</b>	<b>0.08</b>	<b>536</b>	<b>57.8</b>	<b>3.1</b>	<b>2.0</b>
Onça Rosa	INF / Total	<b>3.2</b>	<b>0.88</b>	<b>0.06</b>	<b>251</b>	<b>28.5</b>	<b>1.8</b>	<b>0.8</b>
Jaguar MRE Total	IND	20.1	1.12	0.07	318	225.8	14.9	6.4
	INF	38.8	0.87	0.06	214	336.8	23.4	8.3
	<b>Grand Total</b>	<b>58.9</b>	<b>0.96</b>	<b>0.07</b>	<b>249</b>	<b>562.6</b>	<b>38.3</b>	<b>14.7</b>

Mining Method	Material Type	Resource Category	Ore Mt	Ni %	Ni Metal kt
Open Pit	High-grade >0.6% Ni	IND	11.5	1.11%	127.1
		INF	5.6	0.93%	52.0
	<b>Mill Feed</b>	<b>17.1</b>	<b>1.05%</b>	<b>179.1</b>	
	Low-grade 0.3-0.6% Ni	IND	6.1	0.42%	25.5
		INF	6.5	0.42%	27.3
	<b>Total</b>	<b>12.6</b>	<b>0.42%</b>	<b>52.8</b>	
<b>Open Pit Production Target</b>	IND		17.5	0.87%	152.6
	INF		12.1	0.66%	79.2
	<b>Total</b>		<b>29.6</b>	<b>0.78%</b>	<b>231.8</b>
Underground	IND		0.9	1.51%	14.2
	INF		2.3	1.30%	29.5
<b>Underground Production Target</b>	<b>Mill Feed</b>		<b>3.2</b>	<b>1.36%</b>	<b>43.7</b>
<b>Total Production Target</b>	IND		18.5	0.90%	166.8
	INF		14.3	0.76%	108.8
	<b>Total</b>		<b>32.8</b>	<b>0.84%</b>	<b>275.6</b>
<b>Ore-sorter Product*</b>	<b>Mill Feed</b>		<b>3.8</b>	<b>0.98%</b>	<b>36.9</b>
<b>LOM Mill Feed</b>	<b>Total</b>		<b>24.0</b>	<b>1.08%</b>	<b>260.3</b>

\*Ore-sorter product has been processed pre-concentrator

\* Within 200m of surface cut-off grade 0.3% Ni; more than 200m from surface cut-off grade 1.0% Ni; Totals are rounded to reflect acceptable precision, subtotals may not reflect global totals.